



The Treasury

The beautifully-restored NZHPT Category II Thames Carnegie Free Library building, featured in previous newsletters, is now open for visitors and research.

Resources relating to the early history of the region are being added to all the time and include family history books, jubilee books, area history books, manuscripts, photographs, maps, historical society magazines, newspapers, genealogical books, records and certificates.

Open: 11am – 3pm, Thursday, Friday, Saturday
Except: public holidays, and between Christmas and New Year
Where: 705-709 Queen Street, Thames
www.thetreasury.org.nz

Thames Heritage Week

A full programme of events is being held in Thames (see opposite). Members of the Hauraki Branch Committee will be assisting at NZHPT Category I Thames School of Mines, 101 Cochrane Street.

With a heritage photo exhibition, silent movies, Grahamstown guided twilight walks, historic charabanc tours and much more, there is something for everyone.

Pick up our NZHPT brochures on Coromandel, Grahamstown (early Thames), Shortland & Tararu heritage from i-Sites in the area.

Schoolyard Memories



Photos: McMahan family.

The McMahan family has been given much memorabilia from former pupils and staff once it was known that they were restoring the buildings of the former Rotoehu School, the only remaining remnants of what was Rotoehu village.

The school, originally Pongakawa Village School, was built in 1933 for the tobacco industry in the region. It finally closed in 1986. If you miss the open day on 7 March and wish to find out more, visit: www.oldforestschool.com



The library restored to its former glory. Photo: David Wilton.

Diary Dates

All members and guests are welcome at the following events:-

Thames Heritage Week
Saturday 6 – Sunday 14 March 2010
Victoria Park, Thames
Further details at: www.thamesheritage.co.nz

Thames Heritage Day
Saturday 13 March 2010
Victoria Park, Thames

Hauraki Branch Committee History Cruises:
Enjoy a fresh perspective on the area's past—from the comfort of the launch *MV Kawau Isle*.

Mahaurangi and Kawau Island
Saturday 20 and Sunday 21 March (two cruises)
(departing Warkworth Wharf)

Rakino Island
Saturday 27 March 2010, 10am-3pm
(leaving from Viaduct Basin, Auckland)

Coromandel Harbour and Islands
Sunday 18 April 2010, 9.30am-2pm
(leaving from Shortland Wharf)

Cost is \$42 per person, which includes morning tea and lunch. Bookings are essential – contact Sue Wright on ph: 07 866 8039.

It's your newsletter ... Keep in touch

A New Zealand Historic Places Trust publication

Editor: Gail Henry
Phone: 07 578 1219 **Fax:** 07 578 1141
Email: infolowernorthern@historic.org.nz
Level 1, 28 Wharf Street, Tauranga
Postal address: P O Box 13339, Tauranga 3141

If you would like to be put in touch with your local branch, email the office for contact details.

Local news for Waikato, Bay of Plenty, Tairāwhiti & Hauraki Members No. 23 Autumn 2010

Debatable Heritage

Heritage assets come in various forms: buildings, monuments, archaeological sites, gardens and cemeteries, to name a few. These assets are valued by the community because they contribute to local identity. They establish a sense of place and a sense of time. Commercial buildings make a contribution to the well-being of people, through their ongoing use as places of business or community activity, for generations to come.

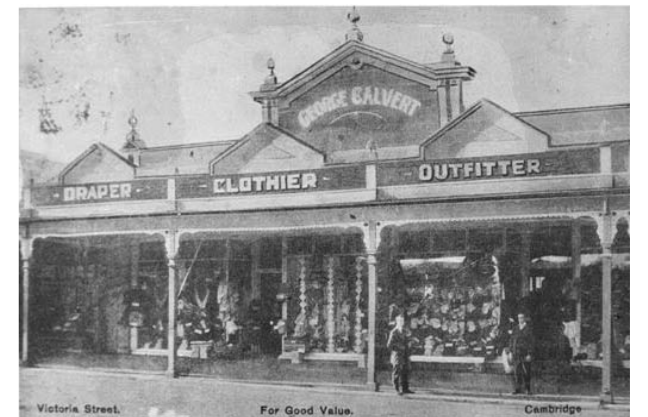
It is not until they are under threat that the real significance of a heritage asset is truly appreciated. Such is the case with Rosie's building in Gisborne – corner of Bright Street and Gladstone Road – that suffered major structural damage following the December 2007 earthquake and was earmarked for demolition.

Through a combination of thorough site analysis, careful asset appraisal, and with a clear line of communication and close collaboration between the owners, insurance assessors, architects, client, Gisborne District Council and NZHPT, an appropriate solution was devised that allowed for sensitive earthquake strengthening and an internal retrofit.

After completion of the work the future of the building is assured not only as a place of business, and an anchor to a major mid-city intersection, but also as a building that sits quietly as an example of local commitment and passion for successful heritage outcomes and one that confirms its status as a heritage asset (see below).

Mike Vincent, Heritage Advisor, Planning

Facelift Grant for Cambridge's Calvert Chambers



Calvert Chambers, undated (between 1913 and 1925). Photo: Cambridge Museum.

Calvert Chambers, a commercial building in Cambridge's Victoria Street, is a privately-owned, nationally significant, Category I historic place and so qualifies for financial help from the NZ Historic Places Trust's National Heritage Preservation Incentive Fund.

Tenants Love Heritage Space

"We get regular compliments about our beautiful building and offices that have character and warmth and how great it is that the internals have remained as the original floor plan and layout, despite multiple tenants over the years," says owner Leigh-Anne Peake.

Continued on page 2 ...

Cornerstone combination

The Spring 2009 edition of the newsletter highlighted the earthquake damage to Rosie's building on the corner of Bright Street and Gladstone Road in Gisborne.

The article noted the importance of weighing up options and impacts before irreversible decisions are made. Rosie's building is



Looks can be deceiving when it comes to earthquake damage. Rosie's building did not show outward signs of significant damage to its street façades, but the brick walls were in bad shape – virtually to the point of collapse under the stress of the shake – some needing rebuild and others repair and strengthening. Photos left to right: after the earthquake (A Walters, Nicoll Blackburne Architects); essential rebuilding underway (G Henry, NZHPT), and completed (B Haynes, McCann 'ics).



representative of a number of buildings that may have been demolished following the December 2007 earthquake, unless a workable solution and tenancies were found. In respect of the successful outcome – and happy tenants – for this building it is apt to review the progression of the building to its current state with Kiwibank and NZ Post occupying the ground floors.

Cambridge Calvert Chambers continued from page 1 ...



Calvert Chambers restored to its former splendour.
Photo: Leigh-Anne Peake.

Work has recently been completed with just such grant assistance. Owner of Unit 3 of the building, Quality Environmental Consulting Ltd's Leigh-Anne Peake, says the 50% contribution of the cost to restore important heritage fabric of the building has been a tremendous help.

"It has been such a boost to get assistance with the work on the building. It was pretty daunting when we started and in a real mess with 18 broken windows, and the previous tenant had used a chainsaw to install two doors in walls! Damage that we have repaired. We lease some of the office space and tenants specifically comment on how happy they are with the retention of the original rimu and totara walls and floors, and of the original office layout.

"I am really thrilled with the way the main street frontage has come up with the plaster repair and careful cleaning. It really does stand out as a special heritage building now, and we also have the confidence of knowing it is better protected from the elements."

A Building That Grew

The George Calvert building, as we now know it, was completed in 1925. Although not on the scale of city department stores, or as known then 'emporiums', it was nevertheless a significant retail venture for Cambridge and one that flourished through until its closure in 1984.

The original business on the same site was known as 'Cambridge House' and, when purchased from Samuel Howard in 1901, Robert Tudehope immediately replaced the wooden building with one of brick. An entrepreneurial operator, Tudehope used ideas such as in-store piano recitals, fashion parades and a limerick competition (that turned out to be illegal) to attract trade.

George Calvert took over the business in 1913. In 1925 he had a second storey added to the Calvert building – Calvert's Chambers, built by Speight Pearce Nicoll & Davys. Further 'modernisation' of the windows and verandah were undertaken in 1928.

Treasured Chattels in Cambridge Museum

NZ Post bought the property in 1985, with plans for demolition that fortunately did not eventuate. During their ownership they did give a number of the building's period retail chattels to the Cambridge Museum, including the Lamson Cash Railway (Rapid Wire System) that has since been set up in the Museum so that younger and future generations can see for themselves the 'whizz bang' of the cash carriages that used to fly to the office in the middle of the building, and one of the long counters is well utilised in 'Fran's Cafe'.

Acknowledgement: Cambridge Museum Archives, research and writing by Eris Parker.

Lamson Engineering NZ Ltd is still operating as an engineering firm in Auckland. In 2003 their engineers installed two of the Calverts cash railways in Cambridge Museum as working exhibits.

www.cambridgemuseum.org.nz/Displays/Cashrail.htm

Reminisce at the Cash Railway website:
www.ids.u-net.com/cash/

Courting Celia at The Elms

A live performance looking at the courtship of one of Tauranga's earliest residents took place during the recent Garden Art @ The Elms festival.

'Courting Celia' – a delightfully entertaining narrative drawn from personal diaries and letters – was presented in the Elms Chapel and, according to the author, Hamilton researcher and historian Diana Masters, the story that unfolds is as intriguing as it is fun.

"Celia Brown was the daughter of Archdeacon Alfred Nesbit Brown of the Elms, and was clearly the apple of her father's eye. She was bright, pretty and much admired by young and old," says Diana.



Celia Brown (prior to 1859). Photo: The Elms Archives.

"As she grew older, she inevitably became the object of considerable attention from a number of eligible suitors – though their attempts to get past Celia's father, Archdeacon Brown, proved to be fruitless."

One man succeeded, however – John Kinder, whose persistence eventually paid off. Though even he wasn't exactly embraced by his prospective father-in-law.

"It's clear from correspondence that Celia was quite taken by John, and he with her. What's equally clear though is that this warmth was not shared by Archdeacon Brown to any degree," says Diana.

Just why that was the case is the stuff of speculation, because on the face of it, John Kinder ticked all the boxes.

"He was an ordained clergyman, headmaster of the Church of England Grammar School and lived in a desirable house in Auckland. What may have worked against him, though, were his High Church leanings as opposed to Brown's more missionary-orientated Low Church theology," she says.

Whatever the reason, it seems that Archdeacon Brown – a widower – had his own romantic preoccupations. And that's where the story gets really interesting.

"Both Alfred and Celia attended a Synod in Wellington where they both met one Christina Johnston. Both appear to have been quite taken by Christina – and both started corresponding with her, but for very different reasons."

Celia, on the one hand, poured her heart out about how much she loved John and how regrettable it was that Father didn't share that affection. Father, on the other hand, poured out his heart – in a Victorian male kind of way – about his affection for Christina, while expressing sorrow that his little girl was soon to be married.

"That put Christina in the uniquely awkward position of being friend, sweetheart, counsellor, Agony Aunt, confidante and general meat in the sandwich," says Diana. "That's difficult enough for anybody – but even more so given the strict social mores of the time. All I can say is that it's a delightful story, and that a lot of the events took place at the Elms. The chapel where the performance took place – a reproduction of the original building – played a pivotal role in the eventual outcome!"

Years of serving on the Kinder House Management Committee in Auckland – as well as volunteer work for the NZ Historic Places Trust in Auckland and the



The Elms Players left to right: Jean Davis (Director), Sandra Cowen, Sue Andersen, Elaine Hollins, Kelsey Carter (Celia Brown) and Don Pilkinson. Photo: K Goodwin.

Waikato – along with a passion for research and history, have provided Diana with the stuff of many a good yarn. 'Courting Celia' is only one.

"There are so many wonderful stories waiting to be told," she says. "It's amazing what a little research will uncover."

The Elms website: www.theelms.org.nz

Kinder House website: www.kinder.org.nz

Adaptive Re-use of Former Coastal Icon



Former Raglan Wharf cement silos. Photo: F van der Heijden.

Built in 1964 by the Golden Bay Cement Company, the silos at Raglan Wharf had a previous life as storage for cement shipments from the South Island.

Today these two solid steel and concrete objects have been creatively transformed into contemporary apartment spaces.

Historically the first cement silo was built and served to supply the Kaimai railway tunnel project until 1980. In the early 1970s a second cement silo was built. Cement was the main commodity to be discharged until the Port of Raglan officially closed on 27 March 1981.

The silos are part of the wider history of the Raglan Wharf that was first constructed in 1874, and progressively expanded to accommodate the shipping trade.

By composition, their solid steel and concrete construction would prove difficult to demolish, so the choice to regenerate and reuse them has provided Raglan and the wharf environment with an inventive and distinctive symbol of 21st century living.